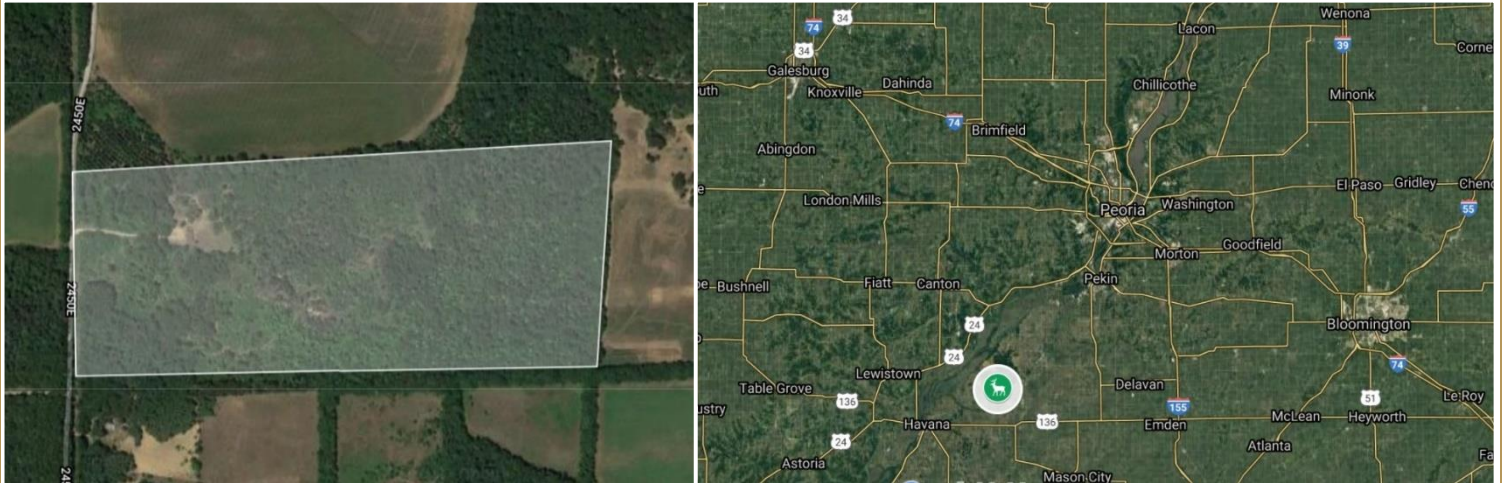


**21269 County Rd 2450E Topeka, IL**

**70 wooded acres w/House**  
**Prime Central Illinois Hunting Ground**  
**\$250,000    \$3,571/acre**



**Property Type:** Recreational Land

### **Site Description**

Prime hunting and recreation await on 70 wooded acres in rural Mason County, Illinois. On the edge of the Sand Ridge State Forest, this property offers excellent whitetail, turkey, squirrel, rabbit and quail hunting opportunities. Several trophy bucks harvested on neighboring properties. Primarily flat with many mature trees, this property had timber harvested approximately 10 years ago opening area for trails and wildlife food plots. A 1,600 sf house with 3 bedrooms and 2 bathrooms sits on the property which is served by a well, propane tank, and public electric utility. All utilities and appliances are believed to function properly. This property is offered as-is with no explicit or implied warranties.

21269 County Rd 2450E Topeka, IL

**70 wooded acres w/House**  
**Prime Central Illinois Hunting Ground**

**\$250,000     \$3,571/acre**



### **Area Description**

Topeka, Illinois is located approximately 34 miles S of Peoria, 52 miles W of Bloomington, 150 miles NE St. Louis, and 190 miles SW of Chicago.

